

COOL GUY

OPERATING ROOM
GEL POSITIONING PAD


High Levels of Pressure Care
& Skin Protection

Light Weight
& Easy to Move

Effective Maintenance
& Convenience



COOL GUYTM
OPERATING ROOM POSITIONING PADS

 **CLEARVIEW
HEALTHCARE**



BRAND “COOLGUY”

The COOLGUY range combines polyurethane gel and light weight foam to provide superior pressure relief and patient protection in the operating room. COOLGUY products are more than 50% lighter than comparable gel-only products. These are designed for stability, easier handling and manipulation by medical personnel during preparation and surgery.

SPECIAL PRODUCTS



PU gel & PU foam

UFG

Foam base at the bottom reduced the weight by 1/3 and gel on top in contact skin offers effective pressure relief.

- Foam at the bottom reduced the weight than 1/3 of existing products.
- Reusable by Waterproof Polyurethane film to protect moisture and foreign material.
- Stable foam base maintain the shape of the pad and easy to move by light weight.



PU gel

UG

The UG series has an extensive range of reusable 100% polyurethane gel pads.

- 100% PU Gel relieve the pressure during surgery.
- Reusable by Waterproof Polyurethane film to protect moisture and foreign material.
- Latex Free



PU foam

UF

Filled with foam but reusable by high quality polyurethane film.

- Reusable by Waterproof Polyurethane film to protect moisture and foreign material.
- Innovated light weight products made with only foam and film.



PU gel

PDC

Polyethylene Cover for easier handling and manipulation by personnel during preparation and surgery.

- Disposable Cover used with pad.
- Saving time of preparation of surgery.
- Soft texture protect skin from alienation and provide comfort to the patient.



Closed Head Ring. Protects the head, face, neck and ears during all type of surgery.

- 1) AP001-UG / 9x4x2 cm / 3.5x1.6x0.8 inch
- 2) AP002-UG / 14x6x3.5 cm / 5.5x2.4x1.4 inch
- 3) AP003-UG / 20x7.5x4.5 cm / 7.9x3.0x1.8 inch
- 4) AP004-UG / 20x7.5x7.5 cm / 7.9x3.0x3.0 inch

*Not Available

- 1) AP002-UFG
- 2) AP003-UFG
- 3) AP004-UFG

- 1) AP001-UF
- 2) AP002-UF
- 3) AP003-UF
- 4) AP004-UF

- 1) AP001-PDC
- 2) AP002-PDC
- 3) AP003-PDC
- 4) AP004-PDC



Open Head Ring. Designed to support a patient's head and face during surgery with easy access for surgical intubation.

- 1) AP011-UG / 9x4x2 cm / 3.5x1.6x0.8 inch
- 2) AP012-UG / 14x6x3.5 cm / 5.5x2.4x1.4 inch
- 3) AP013-UG / 20x7.5x4.5 cm / 7.9x3.0x1.8 inch
- 4) AP014-UG / 20x7.5x7.5 cm / 7.9x3.0x3.0 inch

*Not Available

- 1) AP012-UFG
- 2) AP013-UFG
- 3) AP014-UFG

- 1) AP011-UF
- 2) AP012-UF
- 3) AP013-UF
- 4) AP014-UF

- 1) AP011-PDC
- 2) AP012-PDC
- 3) AP013-PDC
- 4) AP014-PDC

Open Head Ring with Cut.

The paddles open head ring provides flexibility to accommodate various patients.

The soft gel material adjusts to any patient's head and offers sufficient support and comfort during operations.

- 1) AP011/C-UG / 9x4x2 cm / 3.5x1.6x0.8 inch
- 2) AP012/C-UG / 14x6x3.5 cm / 5.5x2.4x1.4 inch
- 3) AP013/C-UG / 20x7.5x4.5 cm / 7.9x3.0x1.8 inch

*Not Available

- 1) AP012/C-UFG
- 2) AP013/C-UFG

- 1) AP011/C-UF
- 2) AP012/C-UF
- 3) AP013/C-UF

- 1) AP011/C-PDC
- 2) AP012/C-PDC
- 3) AP013/C-PDC



Prone Head Rest. Unique design provides excellent comfort, stability and proper support during surgery.

- 1) AP022-UG / 28x23x14.5 cm / 11x9.1x5.7 inch
- 2) AP023-UG / 23x19x13 cm / 9.1x7.5x5.1 inch

- 1) AP022-UFG
- 2) AP023-UFG

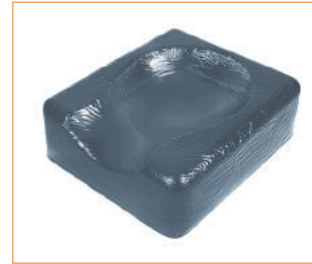
- 1) AP022-UF
- 2) AP023-UF

- 1) AP022-PDC
- 2) AP023-PDC



Head Pad. Head pad protects the head, face, neck and ears also provides comforts and stable positioning during all kinds of surgery.

- AP110-UG / 27x23x7 cm / 10.6x9.1x2.8 inch
- AP110-UFG
- AP110-UF
- AP110-PDC



Supine Head Rest.

Designed for patient in supine position to relieve pressure on ears, neck and back of the head.

- AP112-UG / 27x24x9 cm / 10.6x9.4x3.5 inch
- AP112-UFG
- AP112-UF
- AP112-PDC



Contoured Head Rest. This pad is designed for procedures in the supine position requiring optimum stability of the patient head.

- AP081-UG / 19x19x6 cm / 7.5x7.5x2.4 inch
- AP081-UFG
- AP081-UF
- AP081-PDC



Heel Support Pad.

Light weight heel pads provide maximum comfort and support for heels. [*2pcs/1set](#)

- AP031-UG / 20x11x7 cm / 8x4.3x2.75 inch
- AP031-UFG
- AP031-UF
- AP031-PDC



Heel Support Cushion.

Ergonomic design with Velcro strap to wrap ankle and heel offer stable position and interior foam, gel and air provide sufficient pressure relief.

- AP035-UFG / 39x26x5 cm / 15.3x10x1.9 inch
- Only Available UFG.
Use with 3D Mesh Cover.



Heel Cups without Strap.

Delivers maximum heel protection for presurgery and post-surgery applications. [*2pcs/1set](#)

- AP032-UG / 17x11x5 cm / 6.7x4.1x2 inch
- AP032-UFG
- AP032-UF
- AP032-PDC



Chest Rolls(Adult).

Virtually the same as pediatric chest rolls with the same function to provide pressure relief and pressure sore prevention but in bigger sizes to accommodate adult patients.

- 1) AP041-UG / 30x15x10 cm / 11.8x5.9x3.9 inch
- 2) AP042-UG / 40x15x10 cm / 15.7x5.9x3.9 inch
- 3) AP043-UG / 50x15x10 cm / 19.7x5.9x3.9 inch
- 4) AP044-UG / 30x10x8.5 cm / 11.8x3.9x3.3 inch
- 5) AP045-UG / 40x10x8.5 cm / 15.7x3.9x3.3 inch
- 6) AP046-UG / 50x10x8.5 cm / 19.7x3.9x3.3 inch

- 1) AP041-UFG
- 2) AP042-UFG
- 3) AP043-UFG
- 4) AP044-UFG
- 5) AP045-UFG
- 6) AP046-UFG

- 1) AP041-UF
- 2) AP042-UF
- 3) AP043-UF
- 4) AP044-UF
- 5) AP045-UF
- 6) AP046-UF

- 1) AP041-PDC
- 2) AP042-PDC
- 3) AP043-PDC
- 4) AP044-PDC
- 5) AP045-PDC
- 6) AP046-PDC



Chest Rolls(Pediatric).

Virtually the same as pediatric chest rolls with the same function to provide pressure relief and pressure sore prevention.

- 1) AP047-1-UG / 15x5x5 cm / 5.9x2x2 inch
- 2) AP047-2-UG / 20x5x5 cm / 7.9x2x2 inch
- 3) AP047-3-UG / 25x5x5 cm / 9.8x2x2 inch
- 4) AP047-4-UG / 30x5x5 cm / 11.8x2x2 inch

- 1) AP047-1-UFG
- 2) AP047-2-UFG
- 3) AP047-3-UFG
- 4) AP047-4-UFG

- 1) AP047-1-UF
- 2) AP047-2-UF
- 3) AP047-3-UF
- 4) AP047-4-UF

- 1) AP047-1-PDC
- 2) AP047-2-PDC
- 3) AP047-3-PDC
- 4) AP047-4-PDC



Chest Rolls(Pediatric).

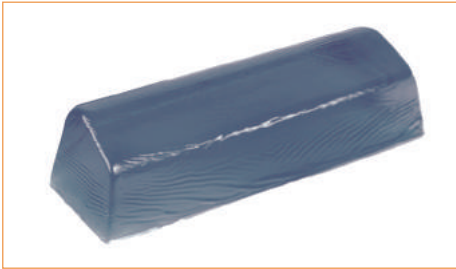
Virtually the same as pediatric chest rolls with the same function to provide pressure relief and pressure sore prevention.

- 1) AP048-1-UG / 15x7.5x7.5 cm / 5.9x3x3 inch
- 2) AP048-2-UG / 20x7.5x7.5 cm / 7.9x3x3 inch
- 3) AP048-3-UG / 25x7.5x7.5 cm / 9.8x3x3 inch
- 4) AP048-4-UG / 30x7.5x7.5 cm / 11.8x3x3 inch

- 1) AP048-1-UFG
- 2) AP048-2-UFG
- 3) AP048-3-UFG
- 4) AP048-4-UFG

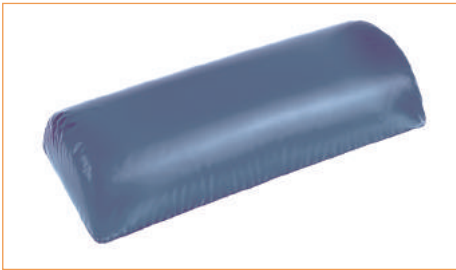
- 1) AP048-1-UF
- 2) AP048-2-UF
- 3) AP048-3-UF
- 4) AP048-4-UF

- 1) AP048-1-PDC
- 2) AP048-2-PDC
- 3) AP048-3-PDC
- 4) AP048-4-PDC



Contoured Chest Rolls. The chest roll has with flat bottom provides stability and great utility.

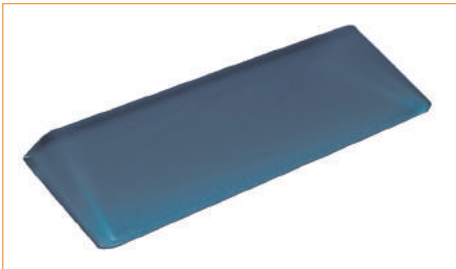
- | | | | |
|---|----------------|---------------|----------------|
| 1) AP049-1-UG / 30x16x13/9 cm / 11.8x6.3x5.1/3.5 inch | 1) AP049-1-UFG | 1) AP049-1-UF | 1) AP049-1-PDC |
| 2) AP049-2-UG / 40x16x13/9 cm / 15.7x6.3x5.1/3.5 inch | 2) AP049-2-UFG | 2) AP049-2-UF | 2) AP049-2-PDC |
| 3) AP049-3-UG / 50x16x13/9 cm / 19.7x6.3x5.1/3.5 inch | 3) AP049-3-UFG | 3) AP049-3-UF | 3) AP049-3-PDC |
| 4) AP049-4-UG / 72x18x12 cm / 28.3x7x4.7 inch | 4) AP049-4-UFG | 4) AP049-4-UF | 4) AP049-4-PDC |
| 5) AP049-5-UG / 72x15x9 cm / 28.3x5.9x3.5 inch | 5) AP049-5-UFG | 5) AP049-5-UF | 5) AP049-5-PDC |



Dome Positioner.

The dome positioner is designed for use during surgery to protect the patient while in the prone or lateral position.

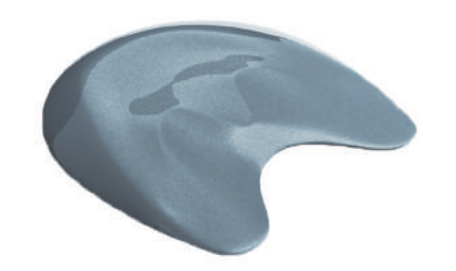
- AP051-UG / 35x15x7.5 cm / 13.8x6x3 inch
- AP051-UFG
- AP051-UF
- AP051-PDC



Slanting Shaped pad.

The pads are designed to support and protect lumbar area, hepatic area and splenic area in lateral supine surgeries or supine surgeries.

- | | | | |
|---|----------------|---------------|----------------|
| 1) AP102-3-UG / 30x22x5/1 cm / 11.8x8.6x1.9/0.3 inch | 1) AP102-3-UFG | 1) AP102-3-UF | 1) AP102-3-PDC |
| 2) AP102-6-UG / 50x12x10/4 cm / 19.7x4.7x3.9/1.5 inch | 2) AP102-6-UFG | 2) AP102-6-UF | 2) AP102-6-PDC |



Sacral Protector.

The Sacral area is an area of serious risk if left unprotected. The Azure Sacral protector has been designed to provide support in the supine and lithotomy positions by relieving pressure and focusing on peripheral support.

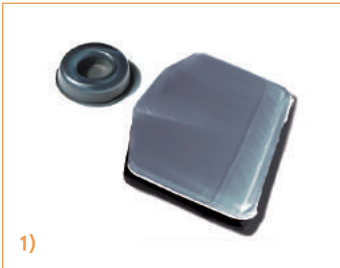
- | | | | |
|--|---------------|--------------|---------------|
| - AP103-1-UG / 40x38x2.5 cm / 15.7x14.9x1 inch | - AP103-1-UFG | - AP103-1-UF | - AP103-1-PDC |
|--|---------------|--------------|---------------|



Contoured Armboard pad.

Clearview's contoured armboard pads are designed to provide added support and stability.

- AP077-UG / 20.5x6x2.1 cm / 20.5x6x2.1 inch
- AP077-UFG
- AP077-UF
- AP077-PDC



Thyroid Pad.

The Thyroid Gland Positioning Pads are designed to protect and support the neck during thyroid and neck surgery. The pads help to fully extend the neck whilst providing stability during the surgery.

- 1) AP104-1-UG / 30x40x12 cm / 11.8x15.7x4.7 inch
14x6x3.5 cm / 5.5x2.4x1.4 inch
- 2) AP104-2-UG / 51x40x14 cm / 20x15.7x5.5 inch

- 1) AP104-1-UFG
- 2) AP104-1-UFG

- 1) AP104-1-PDC
- 2) AP104-1-PDC

Table Pad.

The pad made with Soft Polyurethane gel and cushiony 3D air mesh fabric. Soft gel on top protects patient's skin and 3D air mesh fabric inside provide high pressure relief and comfort by the light weight. There is no wrinkle by folding for moving and storage by the 3D mesh fabric.



- AP301-UFG / 23x50x2 cm / 8.5x20x0.7 inch
- AP302-UFG / 99x50x2 cm / 39x20x0.7 inch
- AP303-UFG / 50x50x2 cm / 20x20x0.7 inch
- AP304-UFG / 50x25x2 cm / 20x10x0.7 inch
- AP305-UFG / 10x38x2 cm / 4x15x0.7 inch
- AP306-UFG / 42x15x2 cm / 16.5x6x0.7 inch
- AP307-UFG / 10x61x2 cm / 4x24x0.7 inch
- AP308-UFG / 45x50x2 cm / 18x20x0.7 inch
- AP401-UFG / 193x86x2 cm / 76x33.8x0.7 inch
- AP402-UFG / 183x50x2 cm / 72x20x0.7 inch
- AP403-UFG / 117x50x2 cm / 46x20x0.7 inch
- AP404-UFG / 160x43x2 cm / 63x17x0.7 inch

- AP405-UFG / 15x35x2 cm / 6x14x0.7 inch
- AP406-UFG / 70x50x2 cm / 27.5x20x0.7 inch
- AP407-UFG / 70x45x2 cm / 27.5x18x0.7 inch
- AP410-UFG / 100x50x2 cm / 40x20x0.7 inch
- AP413-UFG / 22x17x2 cm / 8.7x6.7x0.7 inch
- AP414-UFG / 60x60x2 cm / 24x24x0.7 inch
- AP415-UFG / 90x50x2 cm / 36x20x0.7 inch
- AP416-UFG / 75x25x2 cm / 30x10x0.7 inch
- AP417-UFG / 10x15x2 cm / 4x6x0.7 inch
- AP053-UFG / 31x66x2 cm / 12x26x0.7 inch
- AP555-UFG / 15x66x2 cm / 6x26x0.7 inch



to your health

Clearview Healthcare Products, Inc.

384-10 Mado-ro Mado-myeon
Hwaseong-si, Gyeonggi-do, 18544 Korea
Web : www.bedsorefree.com / www.aircoolguy.com

17-1103



Libertech

1352, Poseungjangan-ro, Jangan-myeon,
Hwaseong-si, Gyeonggi-do, 18584 Korea
Tel : 82-70-4680-0707 Fax : 82-70-8677-8550

